

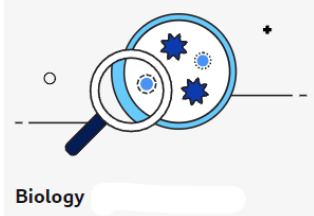


IAT Tech Month



Quiz Answers

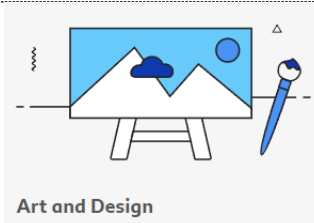
How well did you remember your GCSEs? All except one of these questions were taken from BBC Bitesize mock tests in each subject area. How well did you do?



Biology

What is the process called when an embryo with the same genes as the patient is produced?

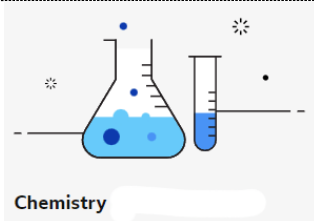
Therapeutic cloning could produce stem cells with the same genetic make-up as the patient. The technique involves the transfer of the nucleus from a cell of the patient, to an egg cell whose nucleus has been removed.



Art and Design

In 2018 a piece of art called "Love is in the Bin" sold for £18.5 million. What happened to the artwork after it sold?

"Love is in the Bin" is a 2018 art intervention by Banksy at Sotheby's London. His 2006 painting of Girl with balloon unexpectedly **shredded** immediately after it was sold at auction.



Chemistry

Which unreactive gas was probably produced by volcanoes early in Earth's history, and built up in the atmosphere gradually?

Nitrogen was released by volcanoes which gradually built up in the atmosphere because it is unreactive.



IAT Tech Month



Computer Science

Kat has a 1GB solid-state memory card in her camera. Her camera takes pictures that are 5MB in size. Approximately how many pictures can Kat take on her camera?

The answer is the total amount of storage divided by the size of one file:

1 gigabyte = 1000 megabytes. $1000 \div 5 = \mathbf{200 \text{ files}}$.

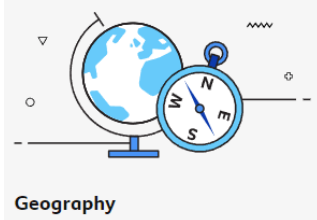
If we use 1024 megabytes for 1 gigabyte the answer would be 204 files.



Drama

What is a proscenium arch?

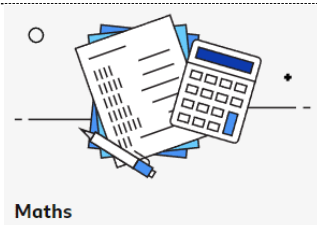
A proscenium arch describes the **frame that surrounds a stage space**, separating the audience from the stage. This helps to create a fourth wall, which is particularly appropriate for naturalistic productions.



Geography

What landform is created when two corries meet?

An **arête** forms where two corries meet. Arêtes are narrow ridges of land.



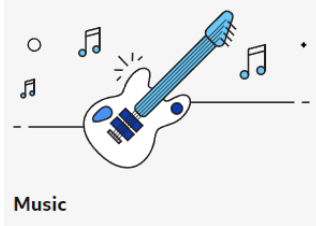
Maths

A square has a side length of 2 cm, the square is enlarged by a scale factor of 3. What is the area of the enlarged shape?

The enlarged square has a side length of 6cm, so its area is $6 \times 6 = \mathbf{36 \text{ cm}^2}$



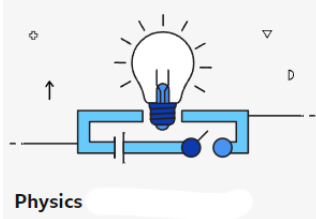
IAT Tech Month



Music

How many semiquavers does a crotchet last?

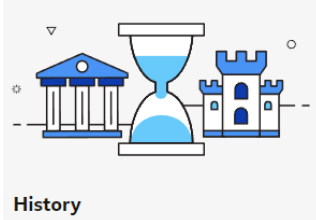
A semiquaver lasts for a quarter of a crotchet beat - so there are **four** semiquavers to the time of a crotchet.



Physics

Which form of nuclear radiation is most penetrating?

Gamma radiation has the highest penetrating power, and is stopped/reduced by thick lead or concrete.



History

In the Elizabethan era, which local government officials looked after poverty related issues?

Justices of the Peace were appointed by the queen and looked after the poor.
